

# 19<sup>th</sup> Typhoon “SOULIK” in 2018

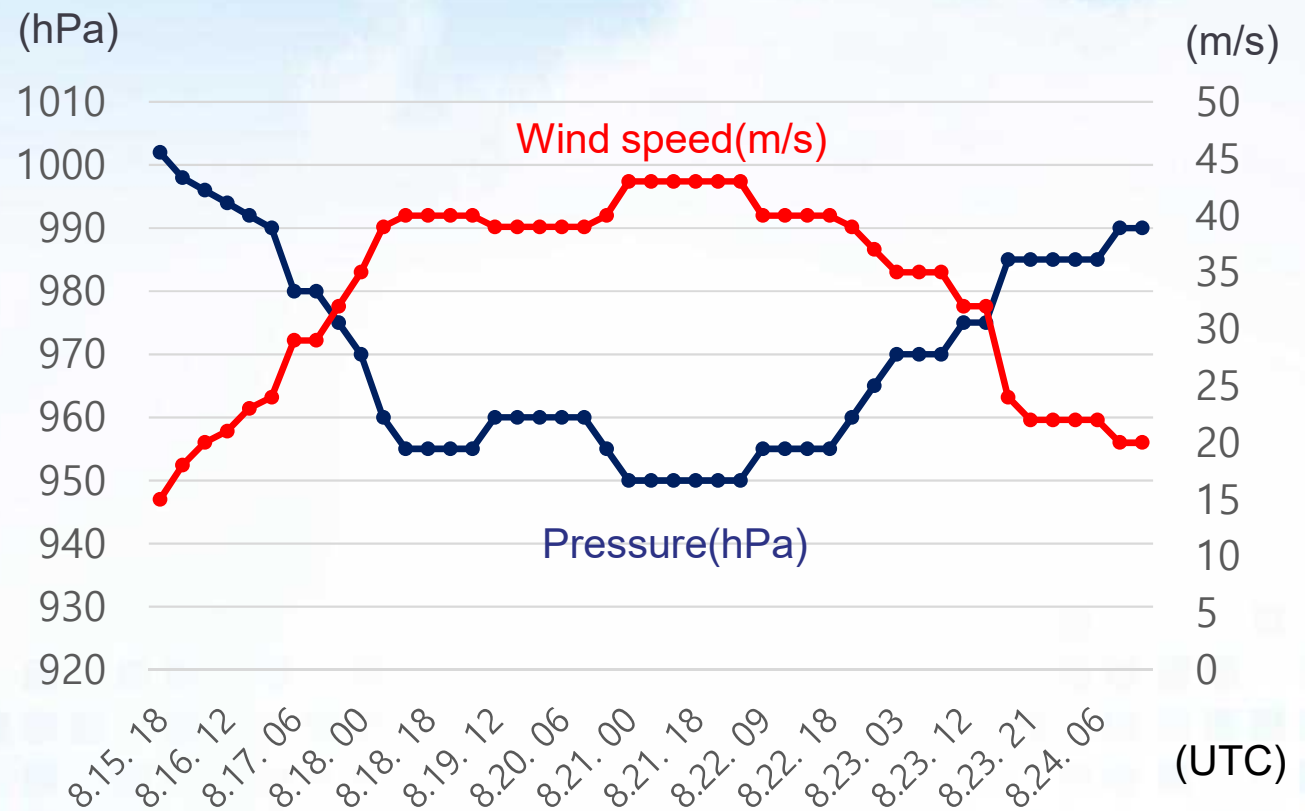
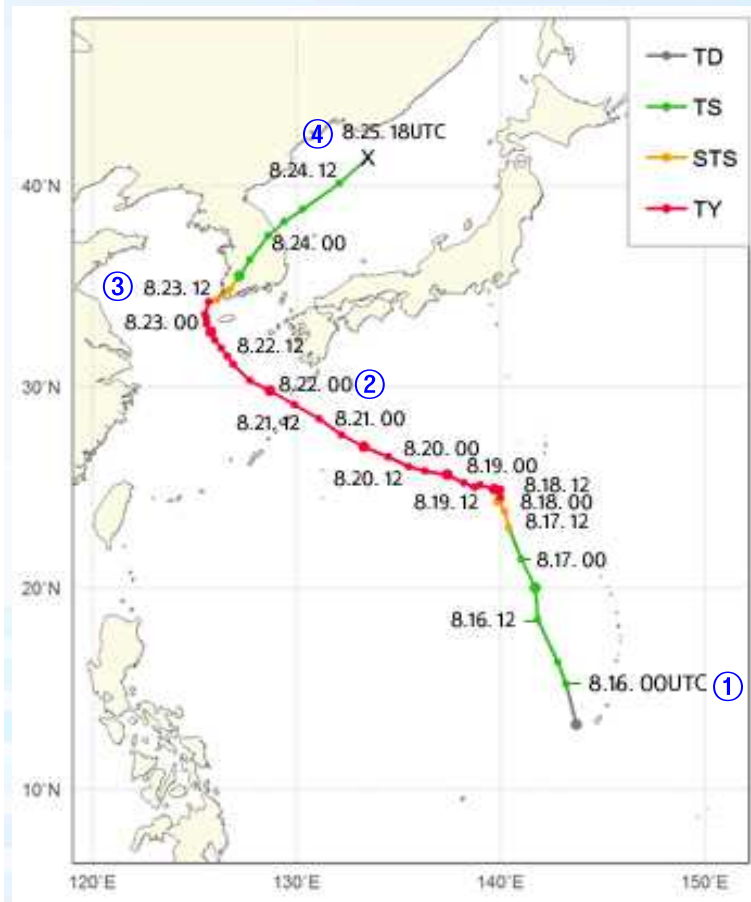


Korea Meteorological  
Administration

National Typhoon Center



# Track and Intensity of SOULIK



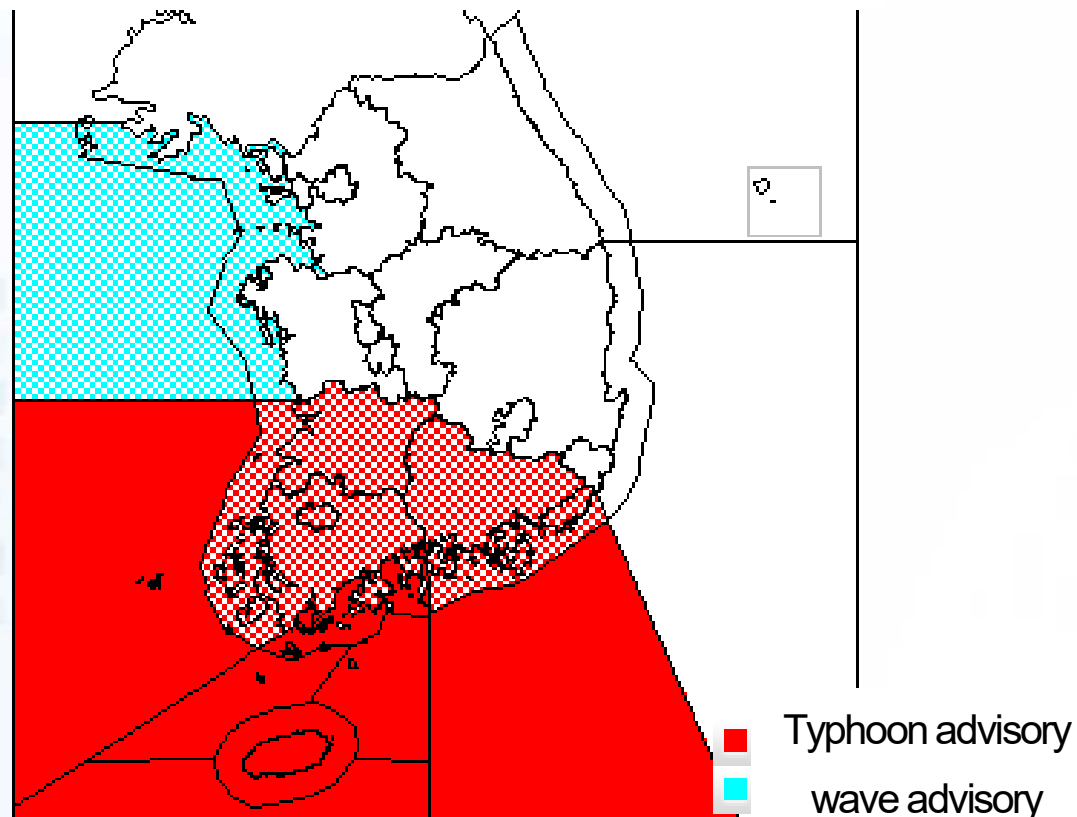
- ① Genesis: August 16 00UTC
- ② Mature stage: August 22 06UTC (950hPa, max. wind speed: 43m/s)
- ③ Landfall: August 23 11UTC(975hPa, 34m/s)
- ④ Extratropical Transition: August 25 18UTC

## Weather Forecast and Typhoon Advisory

<Weather Forecast and Typhoon advisory>

1. Strong winds, heavy rainfalls forecast nationwide 22-24 August due to “SOULIK”s direct influence.

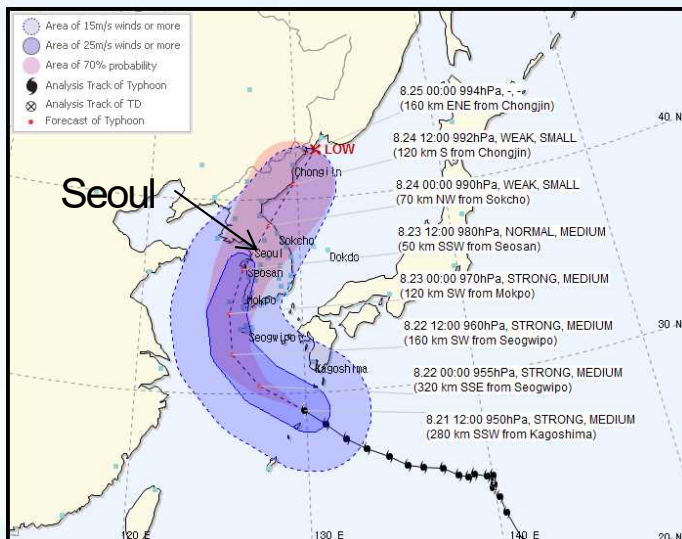
Current weather advisory(23 Aug. 17UTC)



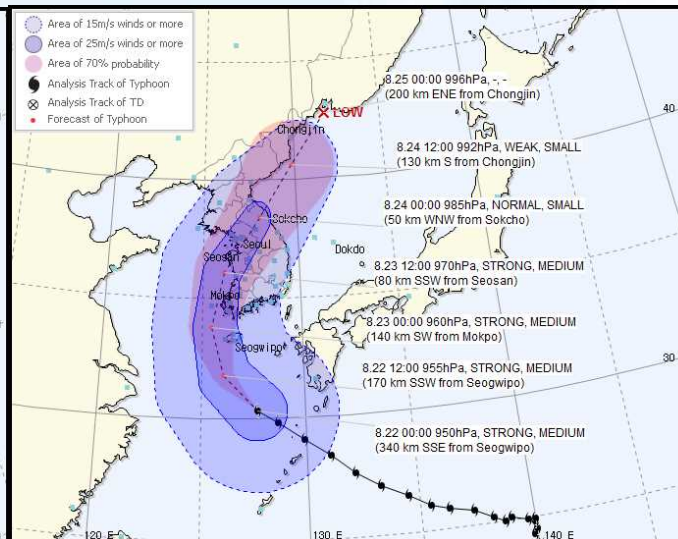


# Track Forecast

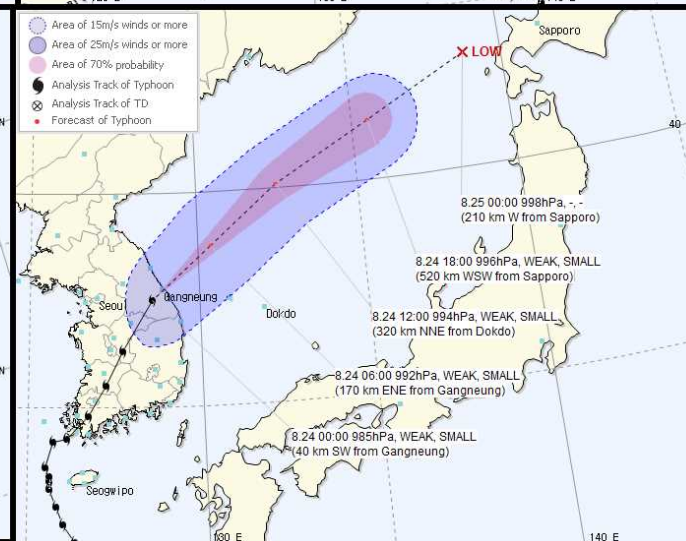
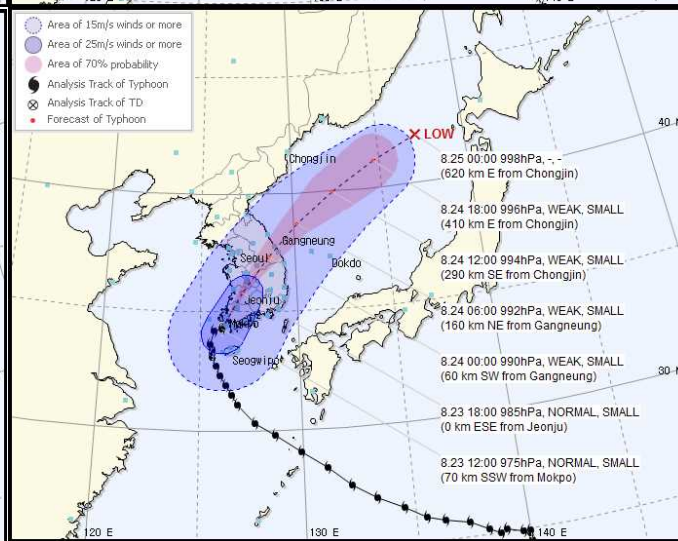
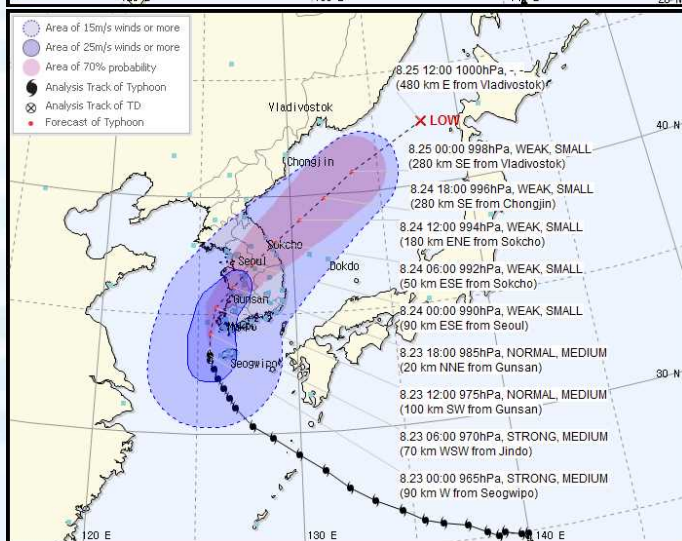
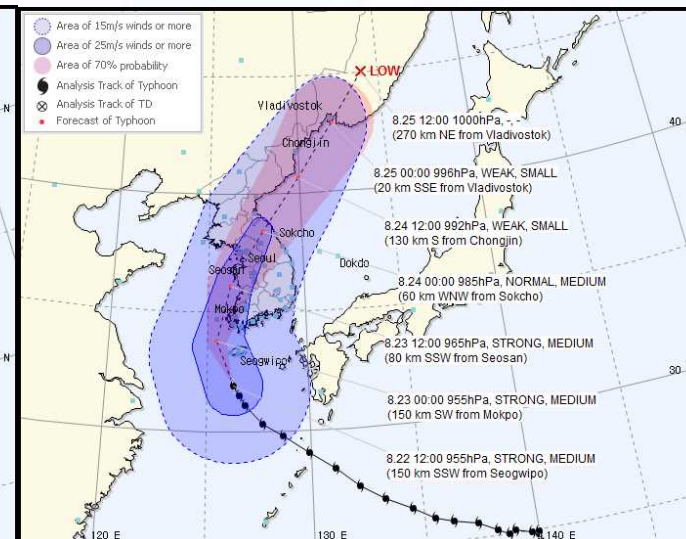
21 Aug. 12UTC



22 Aug. 00UTC



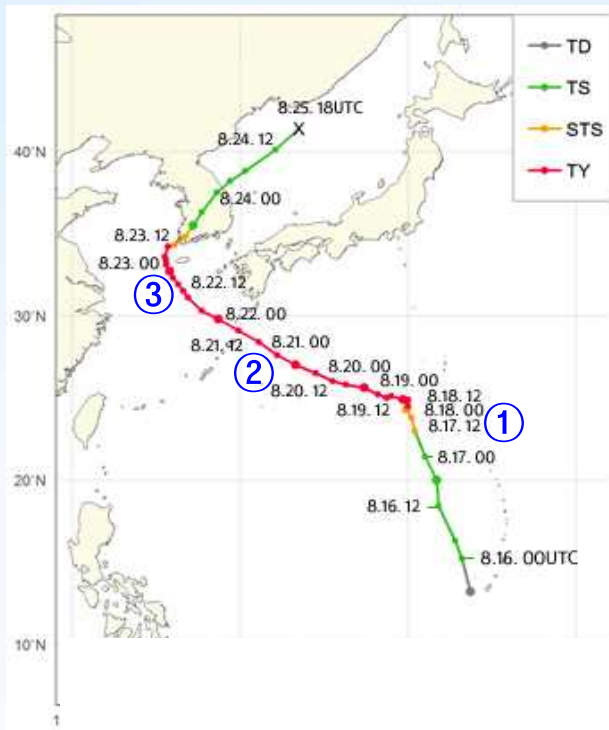
22 Aug. 12UTC



23 Aug. 00UTC

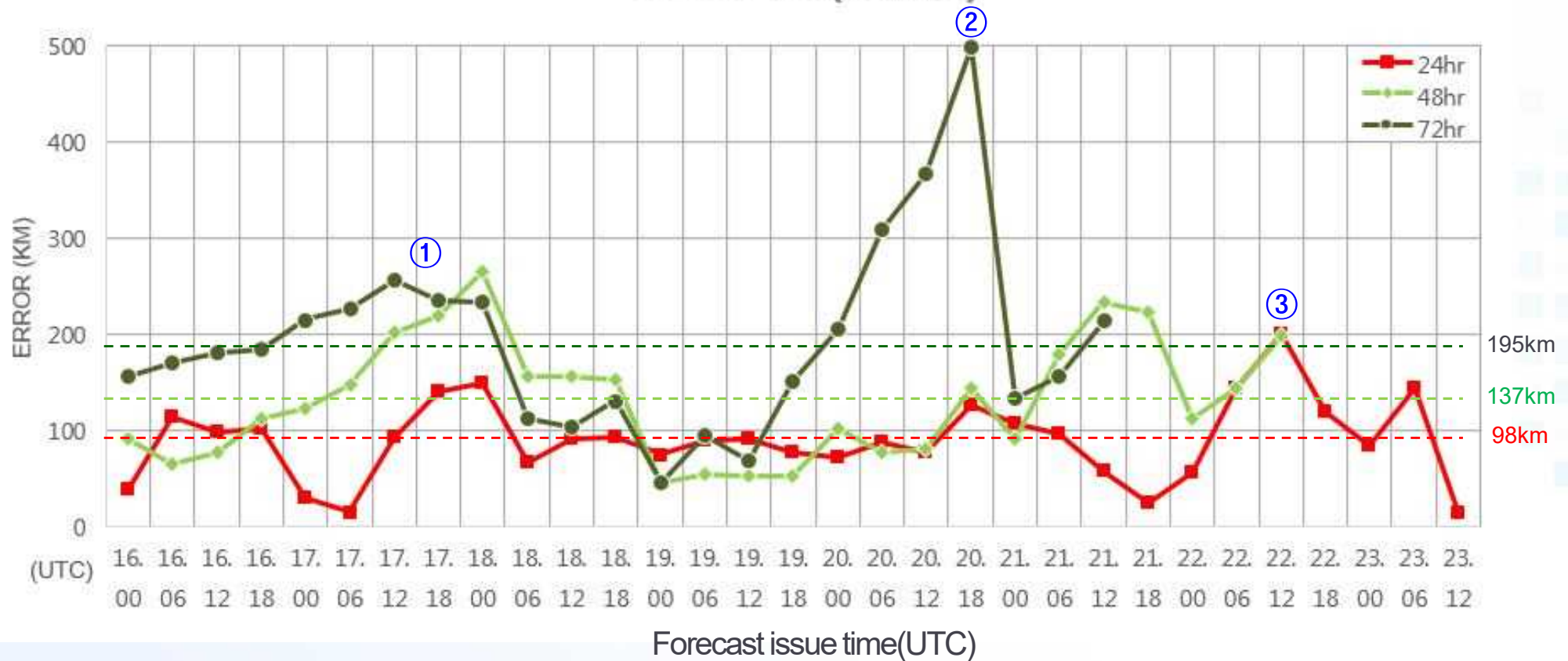
23 Aug. 12UTC

24 Aug. 00UTC



- ① Expected recurvature within 24~72 hours
- ② Expected making landfall near the Seoul within 72 hours
- ③ Expected making landfall near the Seoul within 24 hours

## SOULIK(KMA)

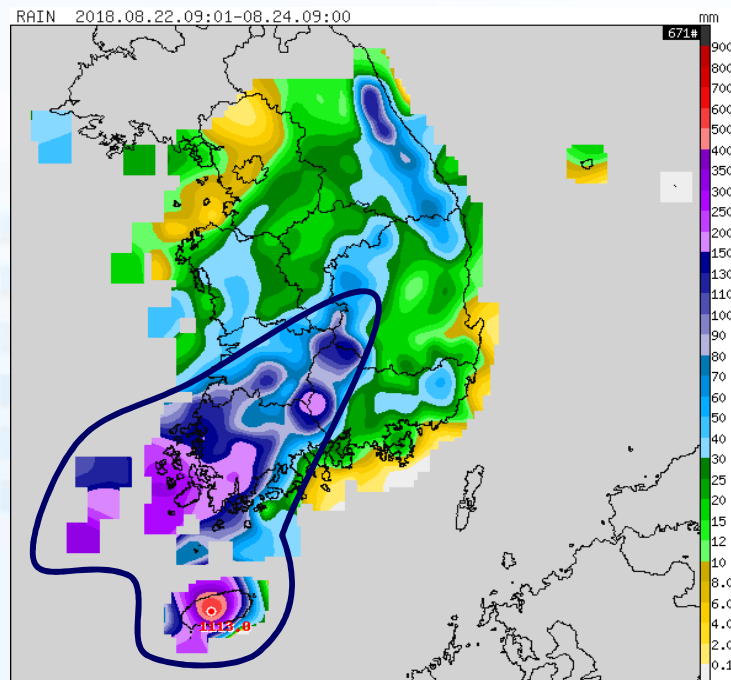




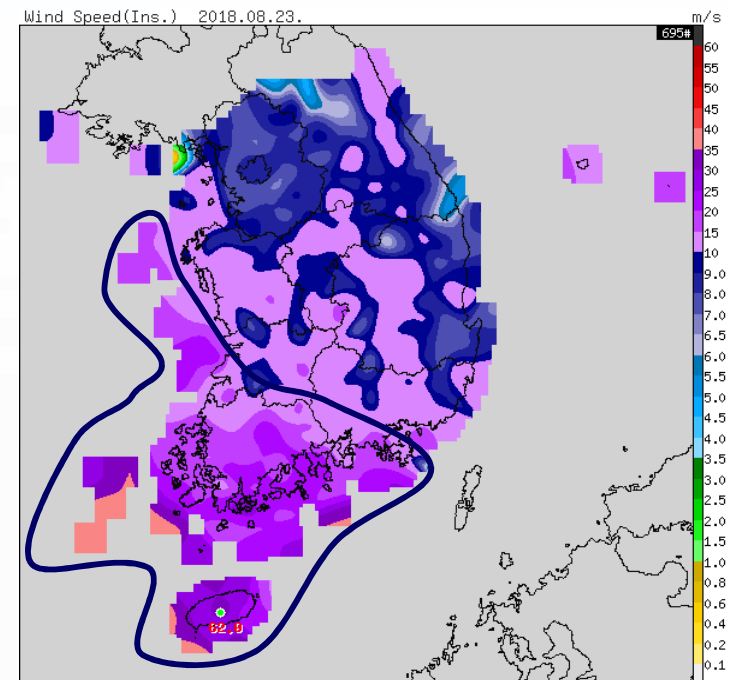
# SOULIK Observational Characteristics

## Observational Characteristics

- It stayed almost 12 hours near Jeju Island due to very complex environmental circumstance.
- With SOULIK passing through the southwestern coast of Jeju, Jeju experienced high winds and extremely heavy rainfall from 22 to 23 August.
- Rainfall of 1113 mm was recorded at the top of the Mt. Halla in Jeju Island.
- Peak gust wind speed of 62.0 m/s was observed at Mt. Halla.



(a) Accumulated rainfall (22-23, August)

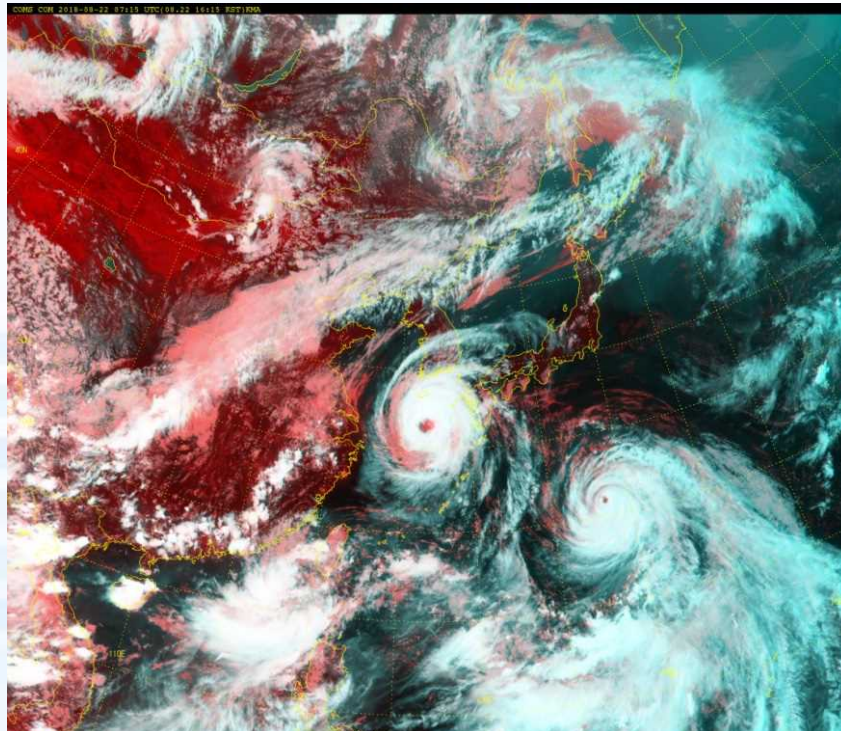


(b) The Maximum wind speed (23, August)

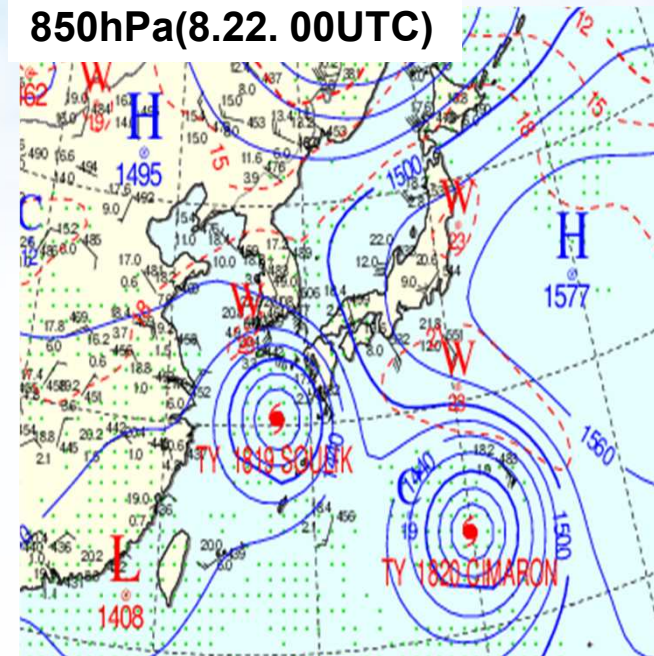
# Binary Interaction with 19<sup>th</sup> and 20<sup>th</sup> Typhoon “CIMARON”

August 22 07:15UTC

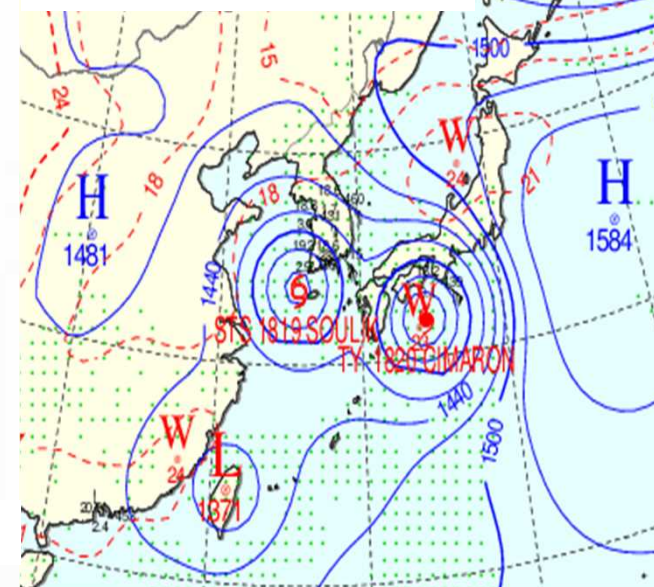
(GEOCOMSAT 2A, Composite Image)

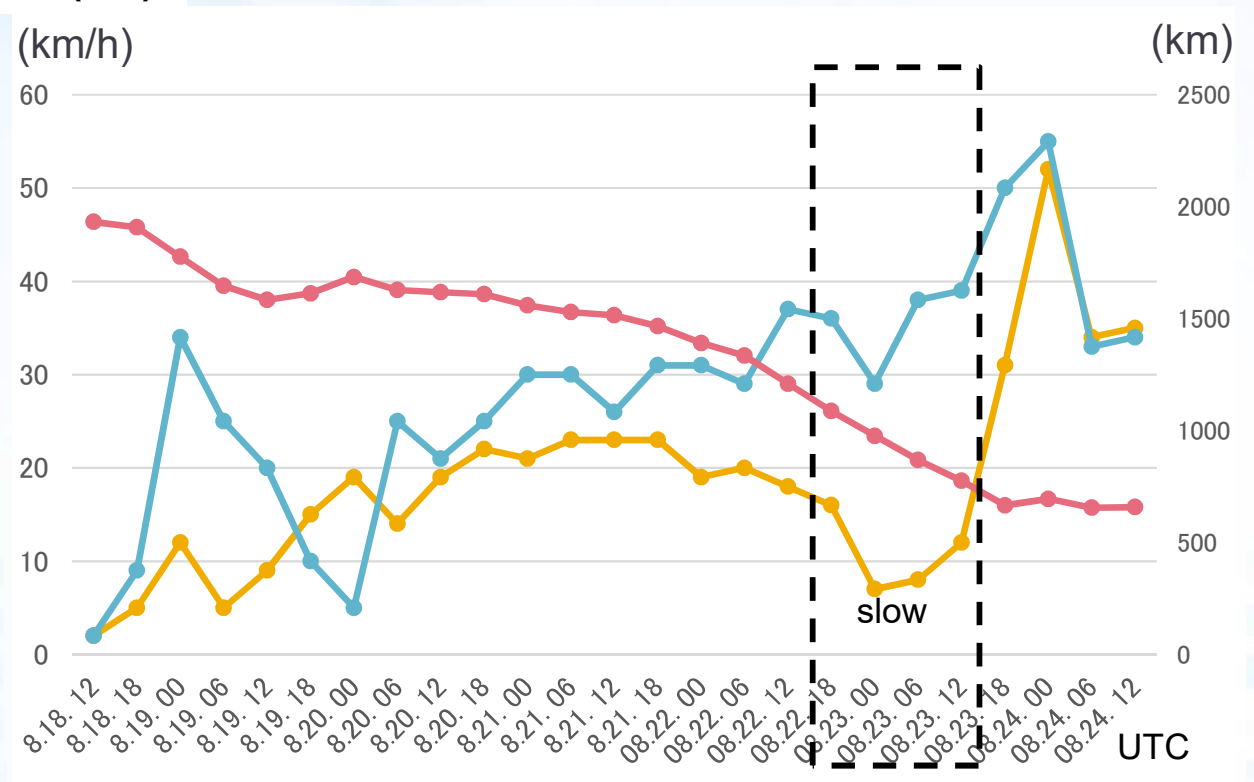
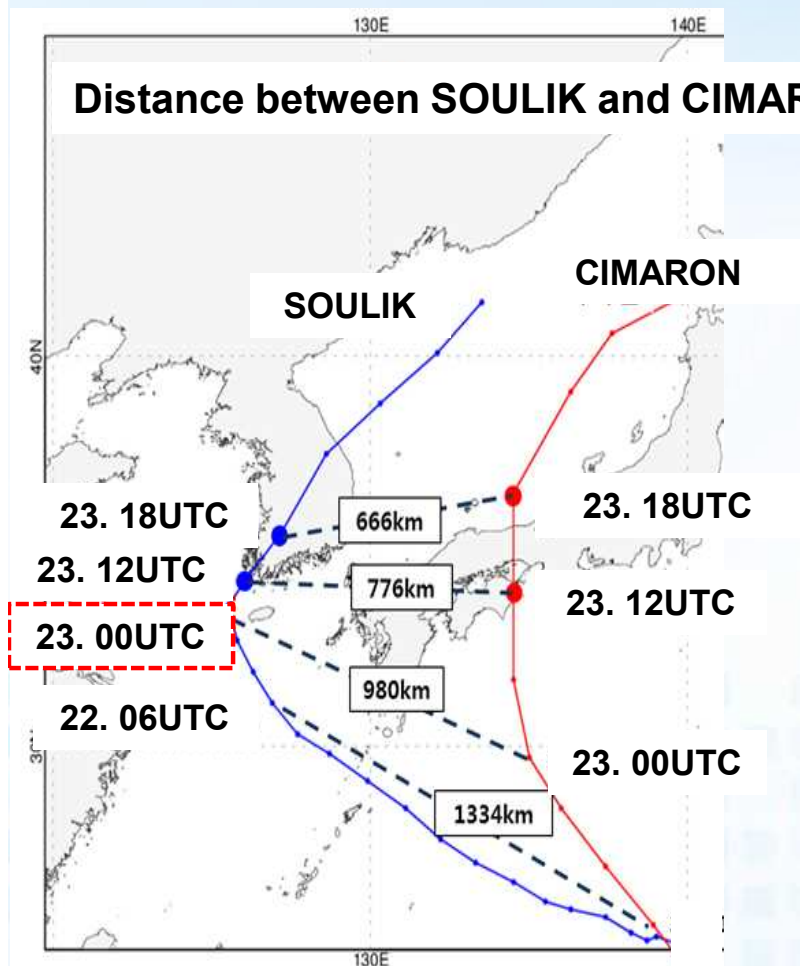


850hPa(8.22. 00UTC)



850hPa(8.23. 06UTC)





Left Y axis: Orange line(Moving speed of SOULIK, km/h), Blue line(Moving speed of CIMARON, km/h)

Right Y axis: Red line[ Distance between 19<sup>th</sup> and 20<sup>th</sup> Typhoons(km)]